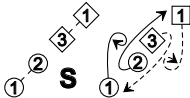
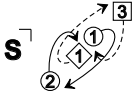


THE LAST SET IN THE HALL

3x32 S

12

KNOT



R

3x 1x 2x

S

3x 1x 2x

T_{B1}^{1/2}

A diagram showing a knot with three strands. The strands are labeled with circled numbers 1, 2, and 3. Strand 1 is in a square box at the top right, strand 2 is at the bottom left, and strand 3 is in a diamond shape in the middle. A large 'S' symbol is to the left of the knot. Dashed arrows indicate the path of the strands.