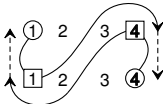
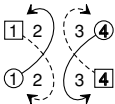


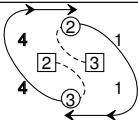
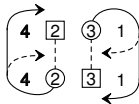
MACFARLANE'S LANTERN

3C & 4C cross on 2nd chord

4x32 S



4 2 3x 1x



Tourbillon
4 2 3x 1x

T_B¹/₂

1 bar



1 bar

Also 3C & 1C



S



T_B¹/₂



1 bar



1 bar

2x 4x 1 3

X_R