

PRINCE CHARLIE'S QUICKSTEP

3C+4C on opp sides

4x48 J

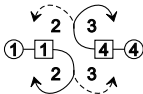
1 4x

Revised version

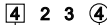
T_◇ **X**_R

(Original version

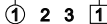
S **T**_{L¹/₂})



**DOUBLE FIGURES
OF EIGHT**

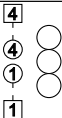
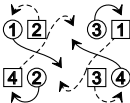


S X_R

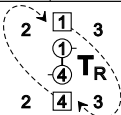
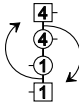


ALL

S



T_{R¹/₂}



T_R

2 4 1x 3x

