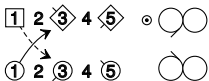


ARNSIDE KNOTT

5x32 S



All cross at top

2 4

T_{B1¹/₂}

1x 3x 5x ALL

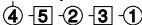
X_R **S**

1 2x 3 4x 1x 4 3x 5

~~**RA**~~ ~~**LA**~~

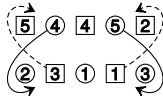
2 4x 1 5x 2x 5 1x 3

~~**RA**~~ ~~**LA**~~



ALL

S



Repeat with new partners