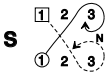


ANDREW GILLIES' STRATHSPEY

8x32 S



S $\left[\begin{array}{c} \text{ } \\ \text{ } \end{array} \right] T_R$

$\left[\begin{array}{c} \text{ } \\ \text{ } \end{array} \right] T_L$ S

$\left[\begin{array}{c} \text{ } \\ \text{ } \end{array} \right] T_R$ $\left[\begin{array}{c} \text{ } \\ \text{ } \end{array} \right] T_L$

2 1x3

S X_R

2 1 3

6