

# THE MURRAY'S OF GLASGOW

4x32 S

1 2 3 4

**RL**

2x 1x 4x 3x



① - ④

**T**<sub>B<sup>1</sup>/<sub>2</sub></sub>

① - ④

3x 4x 1x 2x

**RL**

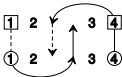
4 3 2 1



③ - ②

**T**<sub>B<sup>1</sup>/<sub>2</sub></sub>

③ - ②



④ - ①

**S X<sub>R</sub>**

④ - ①

2 4 1 3

**P**