

# REELING ROY

3C & 4C start on opposite sides

## 4x48 R

2 3x

**RA**



**LA**



**LA**



**RA<sub>1/4</sub>**



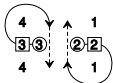
**LA**



**S**



**LA**



4 3x 2 1x



**T<sub>R1/4</sub>**



**T<sub>R1/4</sub>**



**T<sub>L1/2</sub>**



**T<sub>R1/2</sub>**



3 1 4x 2x