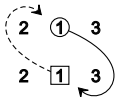
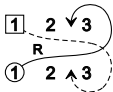


ROUGEMONT CASTLE

3x32 S



Cross & rotate

2 1 3

X_R



X_R

ALL



Chase

Chain rights and lefts

3 1 2

X_R

3 1 2

3 3 1

X_L

1 2 2

2 2 1

X_R

1 3 3

2 1 3

X_R T_R^{1/2} T_R^{1/2}

2 1 3

1 3

A

to 2 3 1