

# THE MASTERS OF ART

2C cross on 2nd chord

3x32 S

1 2x

**T<sub>B</sub><sup>1</sup><sub>2</sub>**

1 bar



**S**



2 places



**T<sub>B</sub><sup>3</sup><sub>4</sub>**



**ALL**



Interlocking



**S**



**LA<sub>2</sub><sup>3</sup><sub>3</sub>**



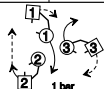
**T<sub>B</sub>S**



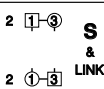
**LA<sub>2</sub><sup>2</sup><sub>3</sub>**



**T<sub>B</sub><sup>1</sup><sub>2</sub>**  
1 bar



1 bar



**S**  
&  
**LINK**