

SLEEPLESS NIGHT

3C & 4C cross on 2nd chord

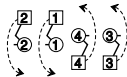
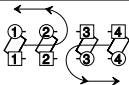
4x(16 S + 16 R)

Strategy

1 2 3x 4x

$T_{R\frac{1}{2}}$

(Knot)



2x 1x 4 3

$T_{L\frac{1}{2}}$

LA

$T_{L\frac{1}{2}}$

4x 1

$S T_{B\frac{1}{2}}$

4 1x



Reel



S S

S S



to: 2 4 1x 3x