

# THE GEORGIAN EARRINGS

3x32 S



**CHAIN**



La Girandole  
ALL

**S**



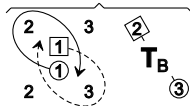
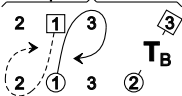
2x 1x



**RA<sub>4</sub><sup>3</sup>**

**X<sub>R</sub>**

Comers pass & turn



1 3

1 3

3 1

**T<sub>B</sub><sup>3</sup><sub>4</sub>**



**T<sub>B</sub><sup>3</sup><sub>4</sub>**