

INVERUGIE CASTLE

3C & 4C start on opp. sides

32 S + 32 J



1 2 3 4

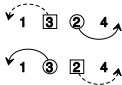
S S ↑

also 3C & 4C



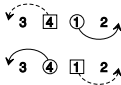
2 3

RA



1 4

RA



4 3 2 1

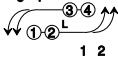
KNOT

to 3 4 1 2

Jg



3 4



1 2

3 4 1 2

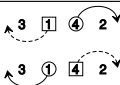
S S ↑

also 1C & 2C



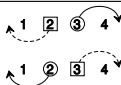
4 1

LA



3 2

LA



2 1 4 3

KNOT