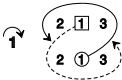
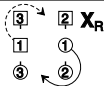


OLD WICK CASTLE

8x32 J



$\boxed{2}$ X_R S $\boxed{3}$
 $\textcircled{1}$ S X_R $\boxed{1}$
 $\textcircled{2}$ X_R S $\textcircled{3}$



$\overbrace{3x \quad 1 \quad 2x}$
 $S \quad T_L \quad S$

