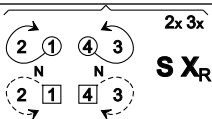


BLACK HORSE MEDLEY

32 S + 32 R

Strathspey
1 2 3 4

RL

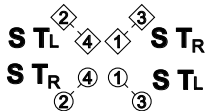


① ④

HS₂

① ④

1x 4x



Half Rondel

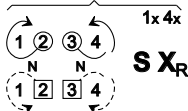


1x 4x

S X_R

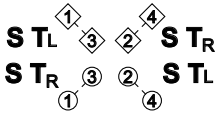
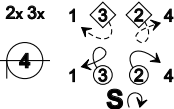
Reel
2 1 4 3

RL



2x 3x

**S &
Spring
Points
twice**



Half Rondel



2x 3x

S X_R