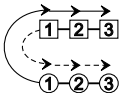


BLACKSMITH OF ELGIN

8x48 J

1 2 3

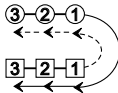
S₂



retain hands

3x 2x 1x

S₂



retain hands

Pick-up Chain



X_R

X_L



X_R



X_L



S_↑ S_↓



S_↑ S_↓



Pick-up Chain

R

Bars 17-24
3C start



2 1 3

T_R