

CAMPBELL'S HORNPIPE

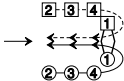
4x32 H

1: **S** $\overset{\curvearrowright}{1}$
4: **S** $\overset{\curvearrowleft}{1}$

21 43
RA

14
LA

1: **S** $\overset{\curvearrowleft}{1}$
4: **S** $\overset{\curvearrowright}{1}$



432
A

Anna Campbell Holden, 1973, Birmingham 1973

4C/4C longwise set.